



# Commercial Stainless

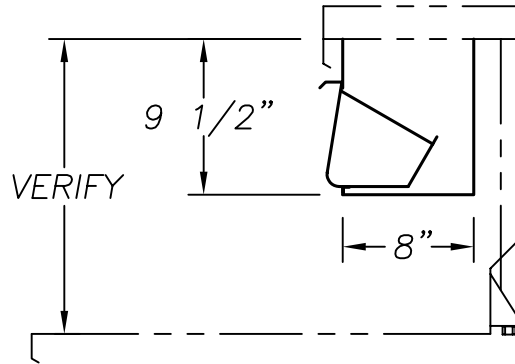
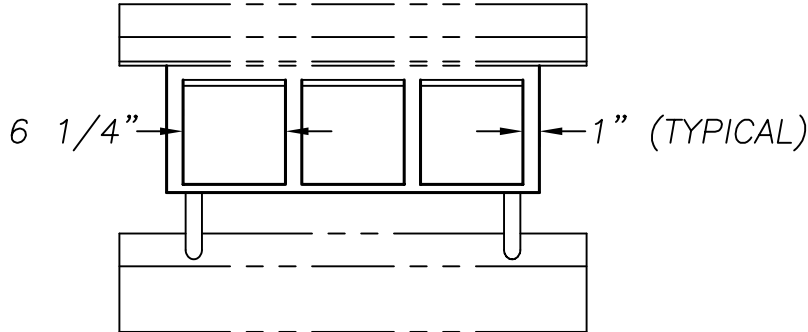
ITEM # \_\_\_\_\_

QTY. \_\_\_\_\_

MODEL # CSB

## SPICE BINS

VERIFY NUMBER OF BINS REQUIRED



### SPECIFICATIONS

SPICE BINS TO BE 18 GA. TYPE 304, 18/8 STAINLESS STEEL, POLISHED TO A # 4 SATIN FINISH. SPICE BINS TO HAVE A S/S PIVOT ANGLE FOR BINS TO REMAIN OPEN WHEN TILTED OUT. BINS TO ALSO BE EASILY REMOVABLE. BIN ENCLOSURE TO BE STUD BOLTED TO OVERSHELF AND TO CONTAIN CLEAN OUT SLOTS AT EACH END OF BOTTOM. OVERSHELF TO BE MOUNTED ON 1" O.D. S/S TUBING MOUNTED THROUGH BACKSPASH OF TABLE BELOW. ALL WELDS TO BE GROUND SMOOTH AND POLISHED.

### OPTIONS

1. ROLLED HANDLE