

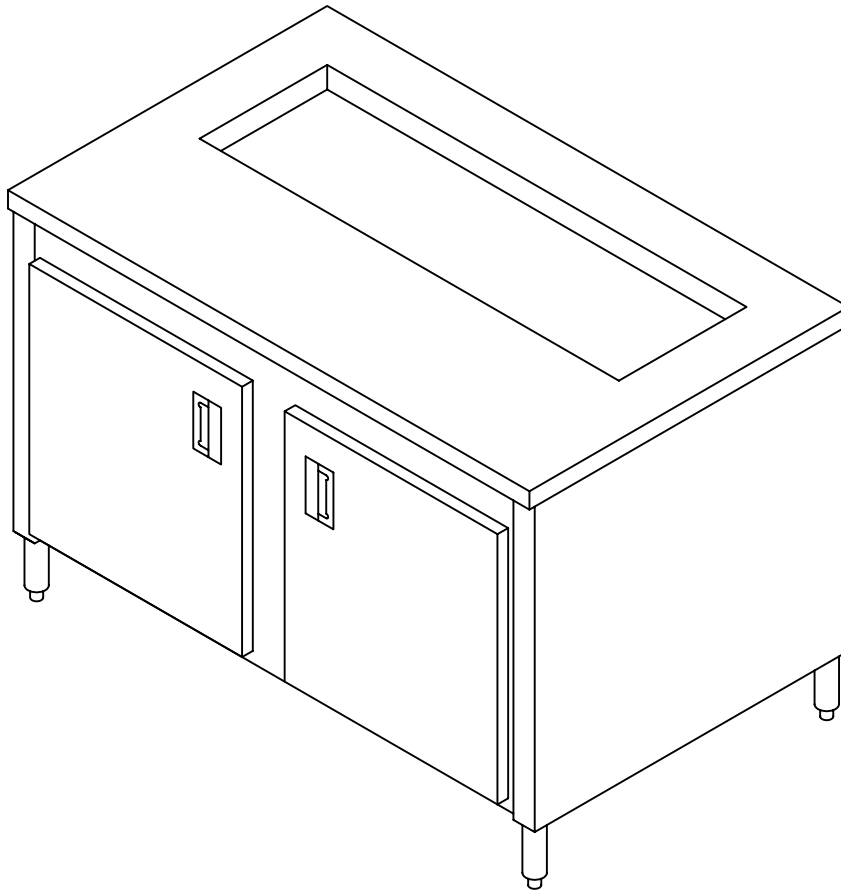
Commercial Stainless

ITEM # _____

QTY. _____

MODEL # CRBRS

REFRIGERATED BASE WITH SANDWICH UNIT (REMOTELY OPERATED)



SPECIFICATIONS

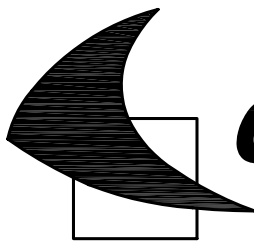
REFRIGERATED BASE TO HAVE 16 GA. TYPE 304, 18/8 STAINLESS STEEL TOP, POLISHED TO A # 4 SATIN FINISH. UNIT TO HAVE 18 GA. S/S INTERIOR WITH 2" THICK FOAMED IN PLACE INSULATION. REAR AND END PANELS TO BE 20 GA. S/S. INSULATED DOORS TO BE 18 GA. S/S WITH MAGNETIC GASKETS TO INSURE A PROPER SEAL. OPENING IN TOP FOR PANS TO BE SUPPLIED WITH 1" S/S DIVIDER BARS.

955 PATTERSON DRIVE
BLOOMSBURG, PA. 17815
TELEPHONE: (570) 387-8980 FAX: (570) 387-8982



CUSTOM BUILT
FOODSERVICE
EQUIPMENT





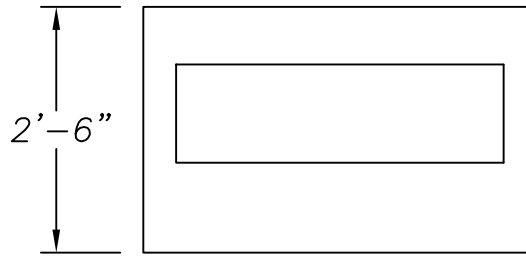
Commercial Stainless

ITEM # _____

QTY. _____

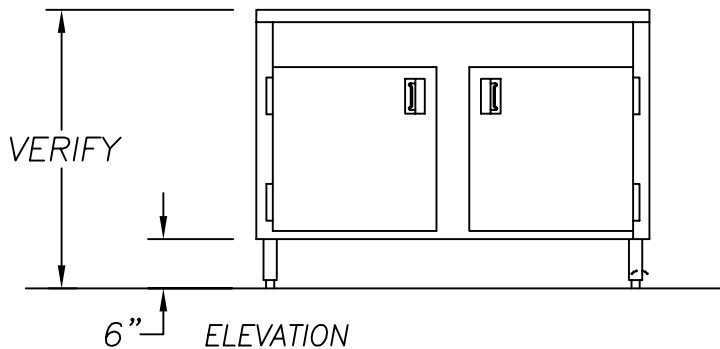
MODEL # CRBRS

REFRIGERATED BASE WITH SANDWICH UNIT (REMOTELY OPERATED)



PLAN VIEW

VERIFY PAN SIZES
& ARRANGEMENT



ELEVATION

OPTIONS

- | | |
|--|------------------------------|
| 1. 14 GA. S/S TOP | 2. ROLLED FRONT EDGE |
| 3. 16 GA. S/S SHELVING | 4. MARINE EDGE |
| 5. ADJ, WIRE SHELVING | 6. 1 1/4" STEEL SQUARE FRAME |
| 7. FLANGED FEET | 8. 1 1/4" SQUARE S/S FRAME |
| 9. BACK SPLASH | 10. LEFT END SPLASH |
| 11. LAMINATED PANELS | 12. RIGHT END SPLASH |
| 13. S/S KICK PLATE | 14. WHITE POLY CUTTING BOARD |
| 15. THERMOMETER | 16. RICHLITE CUTTING BOARD |
| 17. INTERIOR LIGHT | 18. RECEPTACLE |
| 19. DOOR LOCKS | 20. LENGTH _____ |
| 21. CONDENSATE EVAPORATOR | |
| 22. 2 TIER DRAWER ASSEMBLY IN LIEU OF 22" DOOR OPENING | |

955 PATTERSON DRIVE
BLOOMSBURG, PA. 17815
TELEPHONE: (570) 387-8980 FAX: (570) 387-8982



CUSTOM BUILT
FOODSERVICE
EQUIPMENT 