

Item #:	
Quantity:	
Model #:	
Project #:	

Standard Features:

- All 304 stainless steel construction
- Welded square tube frame
- Locking casters
- Positive-Lock Counter Connection System
- 14 gauge top
- 18 gauge exterior panels
- 18 gauge bottom shelf and ends
- NSF Listed
- UL Approved

Product Specification:

Ameraspec *Frost Top Counter* by Commercial Stainless, Inc. All 304 series stainless steel construction. Includes refrigerated frost top with cord and plug. Fully enclosed frame built from square stainless steel tubing, 14 gauge top, 18 gauge exterior and bottom shelf, locking casters and positive-lock counter connection system standard. NSF listed and UL approved.

Options:

- Legs with adjustable bullet feet
- Storage Base Options:
 - Open base with shelf/shelves
 - Removable bottom shelf
 - Doors
 - Sliding or hinged
 - Locks or non-locking magnetic catches
- Top Options:
 - Materials: Stainless Steel, Quartz or Corian
 - Positive-lock counter connection system
- Tray Slide Options:
 - Fixed position or drop-down/folding
 - Stainless Steel, v-ribbed or 3-rail
 - Solid surface; Corian or Quartz
 - Tray runners, square or round stainless
- 8" work shelf
- Kick plate, laminated or stainless steel
- Food protector/sneeze guard
- Double deck display
- 120 or 240 volt utility outlets
- Laminate Panels

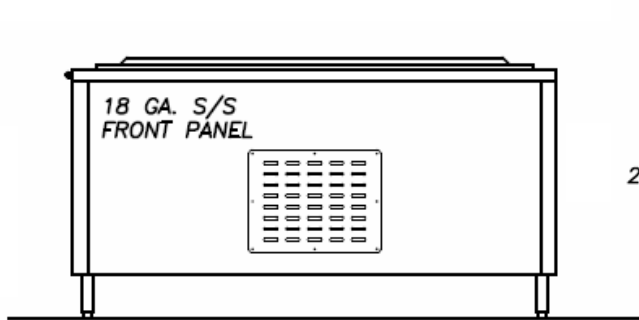
See Ameraspec Options sheet for more details

Quote Requests: quotes@commercialstainless.com

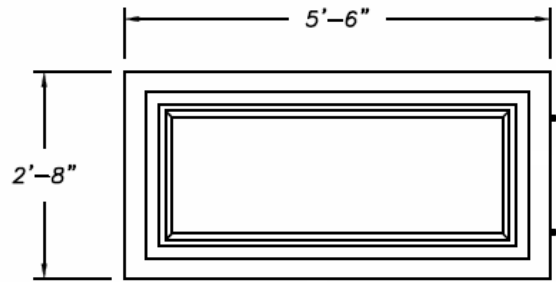
Commercial Stainless, Inc.
 955 Patterson Drive
 Bloomsburg, PA 17815
 P: [570-387-8980](tel:570-387-8980)
 F: 570-387-8982

CSI1107 Rev. 04/15

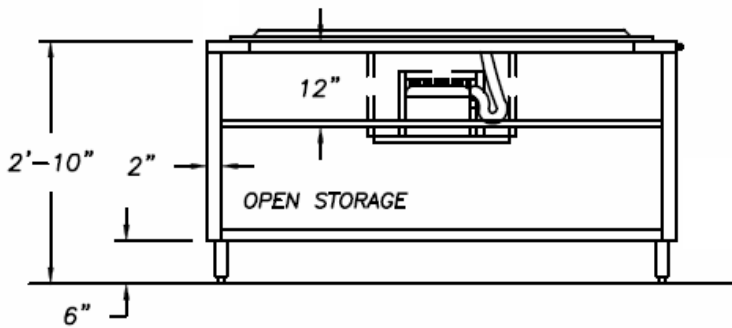




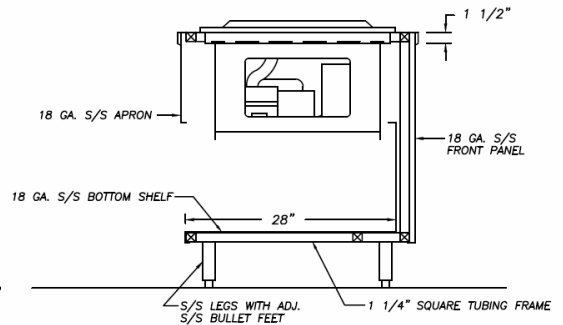
Front Elevation



Plan



Rear Elevation



Section

AMSP-FT2 shown

Hot Food Counter Models:

(Model numbers are determined by number of)

Model Number	Dimensions (L x D x H)	Frost Top Length	Amps	Plug
AMSP-FT2	50" x 32" x 34"	23.75"	7.5	5-20P
AMSP-FT2	66" x 32" x 34"	23.75"	7.5	5-20P
AMSP-FT3	78" x 32" x 34"	37.63"	7.5	5-20P
AMSP-FT4	92" x 32" x 34"	51.5"	7.5	5-20P

Quote Requests: quotes@commercialstainless.com

Commercial Stainless, Inc.

955 Patterson Drive
 Bloomsburg, PA 17815
 P: 570-387-8980
 F: 570-387-8982

CSI1107 Rev. 04/15

